

ROX FOOTWEAR CATALOG



★★★★★

EVERY STEP

ROX



ROX Footwear delivers professional-grade performance and safety across every category, built for military units, tactical teams, first responders, and demanding industrial environments.

Working with world-class technology partners including VIBRAM, SOLES BY MICHELIN, GOODYEAR, 3M, SYMPATEX®, CORDURA®, SCHOELLER®, and many others, ROX integrates proven materials and advanced components to achieve exceptional traction, protection, and longevity.

From high-end fabrics to engineered outsole systems, ROX products are designed to operate with absolute reliability in the harshest conditions.

PLACE YOUR ORDER NOW

+971 50 752 4041
info@rox-tactical.com
www.rox-tactical.com

  [rox.footwear](https://www.instagram.com/rox.footwear)

TABLE OF CONTENTS

MATERIALS & TECHNOLOGIES		4
VIBRAM		5
SOLES BY MICHELIN		6
GOODYEAR OUTSOLES		7
MILITARY		8
Mount MC-24	Vibram	9
Mount XB-42	Vibram	10
SPECIAL FORCES		11
Eagle C-32	Vibram	12
Eagle B-402	Vibram	13
TACTICAL		14
Tactical Raid L-1	Goodyear	15
Field Web L-2	Goodyear	16
OFFICER SHOES		17
Elegant Oxford	Goodyear	18
Dynamic Oxford	Goodyear	19
Ridgeline	Goodyear	20
Urban Lite	Goodyear	21
Comfort Set	Soles By Michelin	22
RUNNING		23
Glide - X	Goodyear	24
Stride Core	Goodyear	25
OUTDOOR		26
Camo Trail W-4	Goodyear	27
Active Flex 3	Goodyear	28



ROX FOOTWEAR

MILITARY, TACTICAL, AND INDUSTRIAL PROTECTION

ROX Footwear is a specialized brand committed to delivering high-performance footwear engineered for the most demanding environments – from elite military and tactical operations to the oil & gas, construction, and heavy-industry sectors.

Every pair we create embodies precision, endurance, and comfort, designed for professionals who rely on their gear to perform flawlessly under pressure. All ROX models are developed and tested in accordance with EN ISO 20345, EN ISO 20347, and ASTM F2413 / F2892 standards, ensuring full compliance with international safety and occupational requirements while our specialized models consistently exceed these benchmarks for protection, durability, and comfort.

Our development philosophy is built on collaboration with globally recognized technology partners, each a leader in their respective discipline.

For outsoles, we work exclusively with VIBRAM, featuring their advanced Traction Lug Technology for superior grip and stability; Soles by MICHELIN, renowned for road-tested traction and flexibility; and GOODYEAR, celebrated for its durable, performance-driven compounds.

For insulation, ROX integrates premium 3M Thinsulate™ materials to ensure warmth without added bulk. Waterproofing is achieved through Sympatex® PFAS-Free membranes, offering outstanding protection and breathability while meeting the highest sustainability standards.

Our uppers are crafted from genuine full-grain leather and premium suede, reinforced with technical textiles such as Cordura® and Schoeller® fabrics for abrasion resistance and lightweight durability.

At ROX Footwear, performance is engineered from the ground up – combining innovation, material excellence, and field-tested reliability to equip those who protect, build, and lead.



ROX

MATERIALS AND TECHNOLOGIES

ROX boots are engineered to meet the highest standards of performance demanded by military, tactical, and professional users. Every component is selected from internationally recognized brands renowned for their innovation, quality, and reliability. Each material contributes to superior durability, comfort, and protection in the most demanding environments.



Additional Features for military and tactical boots:

- 96/3 Tex triple-strand high-tenacity yarn.
- Soft internal lining for breathability and comfort.
- Thermoplastic toe box and heel counter for additional stability.
- Powder coated corrosion resistance brass eyelets and speed hooks for quick lacing.



Vibram® – Industry-leading rubber soles that have set new standards of grip, traction, durability and lightness in the footwear industry, making the yellow octagon an unparalleled symbol of performance and quality.



Soles by Michelin® – Durable, high-traction rubber outsoles built on Michelin's century-long technical heritage, offering multidirectional grip, flexibility, and exceptional wear resistance.



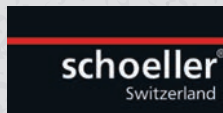
Soles by Goodyear – Rubber outsoles developed for enhanced grip, stability, and durability across challenging conditions, using premium compounds engineered for long-lasting performance.



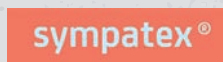
3M™ Thinsulate™ – Lightweight thermal insulation providing warmth without bulk and consistent performance even in damp or cold conditions.



CORDURA® – High-tenacity nylon fabric offering exceptional resistance to abrasion, tearing, and scuffing for extended service life.



Schoeller® Textiles – Swiss engineered performance fabrics combining stretch, breathability, and advanced climate control with outstanding durability.



Sympatex® – Waterproof, windproof, and breathable membrane technology offering sustainable comfort and protection in all weather conditions.



YKK® Zipper – YKK heavy-duty 8mm Vislon® molded plastic zipper, with T-Film water repellent tape and a double-pull automatic locking slider.



Composite Toe – Lightweight, non-metallic toe cap meeting international safety standards ASTM F2413 and EN ISO 20345 for impact and compression protection.



Kevlar Insole – Flexible, anti-puncture protection layer providing underfoot defense against sharp objects and rugged ground conditions.

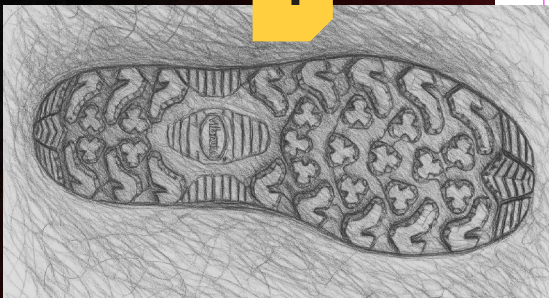


In collaboration with Vibram, the world leader in high-performance rubber soles, our designs are created to deliver maximum traction, durability, and comfort across every terrain. Each outsole begins as a concept sketch, refined into detailed 2D and 3D engineering models before precision molds bring the design to life. Using Vibram's advanced compounds and performance technologies, every sole is built to exceed the demands of professional, tactical, and outdoor environments.

Integrating Vibram Traction Lug Technology, our outsoles provide superior grip, flexibility, and wear resistance on all surfaces. From steep trails to urban settings, each step reflects Vibram's spirit of innovation, craftsmanship, and commitment to functional design that has defined its legacy for over eight decades.

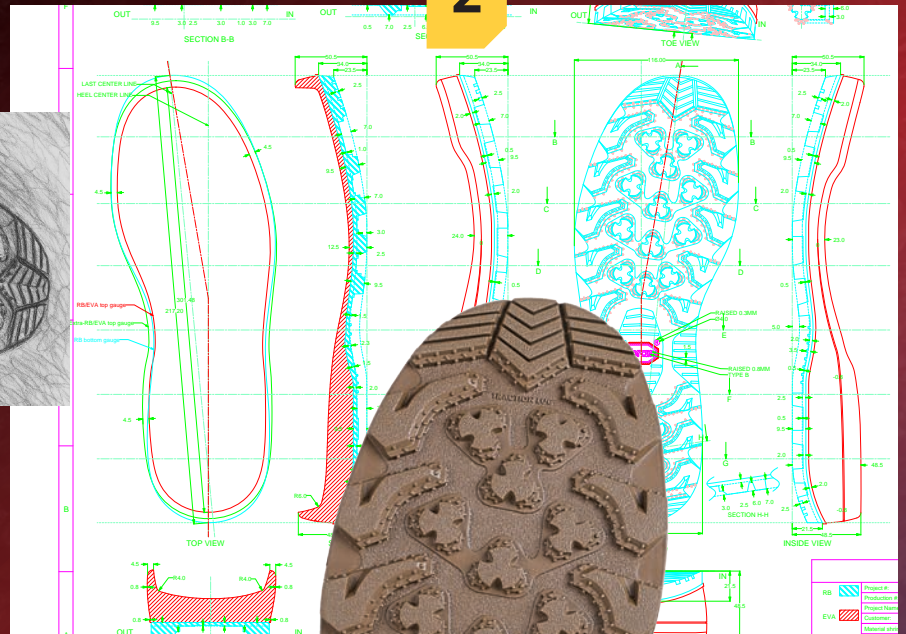
2D BLUEPRINT

1

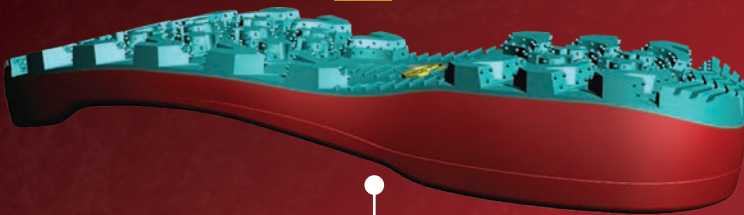


HAND-DRAWN CONCEPT

2



3



3D MODEL - MOLD SIMULATION

4

TOOLING & PRODUCTION



EXPERIENCE **THE** INNOVATION

SOLES BY

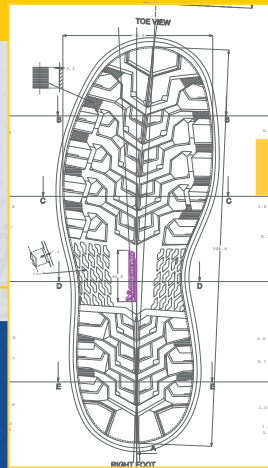


With over a century of rubber innovation, MICHELIN is a global leader in high-performance traction and durability. Our outsoles, developed in collaboration with Soles by MICHELIN, apply the same tire technology expertise to deliver superior grip, stability, and control across environments, from tactical operations to safety, running, and outdoor performance. Each sole reflects MICHELIN's heritage of engineering excellence and continuous innovation.

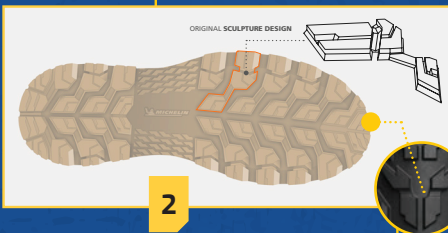
Soles by MICHELIN outsoles combine multi-zone tread patterns and advanced rubber compounds to ensure flexibility, abrasion resistance, and dependable traction in all conditions. Tested under extreme temperature and surface variations, they provide lasting comfort, balance, and protection. Built for professionals and athletes alike, Soles by MICHELIN symbolize a legacy of innovation, performance, and trusted reliability.



SAFETY SYSTEM



STABILITY & CONTROL



WATER EVACUATION & FLEXIBILITY

DURABILITY

EN ISO 20344/
20345 RUBBER

GOOD YEAR

Trusted by professionals worldwide, Goodyear outsoles are engineered to perform in the most demanding tactical and industrial conditions. Through our collaboration with Goodyear, each outsole combines innovation, durability, and traction to ensure consistent performance across various terrains, from rugged outdoor missions to urban operations. Developed with advanced research and precision engineering, Goodyear outsoles can endure extreme impact, abrasion, and temperature variations while maintaining flexibility and grip.

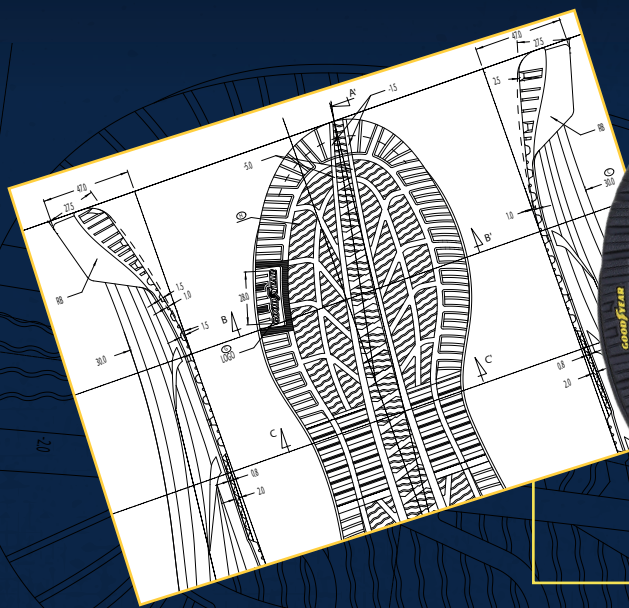
GOODYEAR OUTSOLES

www.rox-tactical.com



INSPIRED BY
WRANGLER
DURATRAC®

Every outsole undergoes rigorous testing per ASTM and international standards to evaluate slip resistance, wear life, and stability. The result is a perfect balance of strength and adaptability, delivering secure footing, comfort, and protection in every environment.



INSPIRED BY
ASSURANCE
WEATHERREADY®

MILITARY



**BUILT FOR SERVICE,
TESTED FOR STRENGTH**

Engineered for endurance and reliability, these boots deliver solid protection and all-day comfort in every mission. Reinforced structure, premium materials, and proven traction ensure dependable performance in any combat environment.

MOUNT | MC-24



The MOUNT MC-24 is engineered for tactical and military operations, delivering uncompromising strength, all-terrain endurance, and elite-level comfort under extreme conditions. Exceeds the ASTM F2913 and EN ISO 20347 slip-resistance requirements.



MILITARY BOOTS



ROX

UPPER: Genuine water-repellent cattlehide suede leather with Cordura® 1000D nylon panels for high abrasion resistance and flexibility.

MIDSOLE: PU-injected for responsive shock absorption and lasting comfort.

INSOLE: Orthopedic EVA removable footbed providing ergonomic cushioning and fatigue reduction.

SHANK: Full-length polypropylene board for improved stability, torsional rigidity, and lateral support.

OUTSOLE: Vibram® Superwork compound with Traction Lug Technology for superior grip, oil/slip resistance, and extended wear life.

HEIGHT: 8 in

WEIGHT: ± 44 oz per pair for size U.S. 9 (±1250 g for EU 42)

COLORS: Coyote Brown | Dark Grey | Dark Olive Green

SIZES

U.S. 4.5 – 15 | EU 36 – 49

OPTIONAL

- ★ 3M Thinsulate™ insulation
- ★ SYMPATEX® PFAS-free waterproof membrane

MOUNT | XB-42



Purpose-built for tactical and military professionals, the MOUNT XB-42 combines maximum strength, superior traction, and exceptional durability for operations in the harshest environments. Designed to outperform expectations, it exceeds the ASTM F2913 and EN ISO 20347 slip-resistance requirements.



MILITARY BOOTS



202X

UPPER: Premium Full-Grain cattlehide leather offering outstanding tensile strength, abrasion resistance, and durability.

MIDSOLE: PU-injected for shock absorption and long-lasting resilience.

INSOLE: TPU ergonomic insole designed for comfort, arch support, and high durability under continuous wear.

SHANK: Full-length polypropylene board for reinforced stability, torsional control, and lateral strength.

OUTSOLE: Vibram® Superwork compound with Traction Lug Technology for maximum grip, oil/slip resistance, and superior wear life.

HEIGHT: 8 in

WEIGHT: ± 44 oz per pair for size U.S. 9 (±1250 g for EU 42)

COLORS: Black | Dark Brown

SIZES

U.S. 4.5 – 15 | EU 36 – 49

OPTIONAL

★ 3M Thinsulate™ insulation ★ SYMPATEX® PFAS-free waterproof membrane

★ Vibram® Mont compound outsole for harsh environments and offering low abrasion

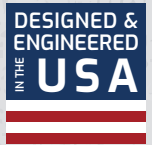
SPECIAL FORCES



BUILT FOR DUTY MADE TO ENDURE

Designed to perform in the harshest terrains, these boots combine advanced materials, Vibram Outsoles with outstanding performance, superior traction, and unmatched comfort. Every stitch serves a mission: to protect, support, and empower those who face the impossible. Reliability and resilience.

EAGLE | C 32



Engineered for elite special forces and high-demand tactical missions, the EAGLE C-32 is a heavy-duty boot built for maximum protection, stability, and long-lasting endurance across the harshest operational environments, delivering unwavering performance in every critical moment.

SPECIAL FORCES



ROX

- UPPER:** Suede Genuine Cattlehide water-resistant leather with Cordura® 1000D fabric for maximum strength, abrasion resistance, and durability under extreme field conditions.
- MIDSOLE:** PU-injected for high-impact absorption and superior energy return, reducing fatigue during long operations.
- INSOLE:** TPU ergonomic insole for firm arch support, comfort, and lasting durability.
- SHANK:** Full-length polypropylene board for uncompromising stability and structural control.
- OUTSOLE:** 3/8-inch thick Vibram® heavy-duty rubber outsole engineered for extreme terrain, with deep and wide traction lugs ensuring solid grip and extended wear life.
- HEIGHT:** 8 in
- WEIGHT:** ± 51 oz per pair (± 1450 g)
- COLORS:** Coyote Brown | Desert Tan | Dark Grey | Olive Green

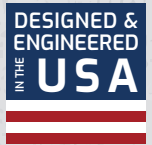
SIZES

U.S. 6.5 – 14 | EU 39 – 48

OPTIONAL

- ★ Vibram® Outsole with Superwork Compound
- ★ 3M Thinsulate™ insulation
- ★ SYMPATEX® PFAS-free waterproof membrane

EAGLE | B 402



Built for special forces and military special operations, the EAGLE B-402 is a heavy-duty combat boot engineered to deliver maximum protection, endurance, and performance in the harshest operational environments with absolute reliability under pressure.

SPECIAL FORCES



ROX

UPPER: Premium full-grain cattlehide leather with Cordura® 1000D fabric offering exceptional strength, abrasion resistance, and durable water-resistant flexibility for demanding field missions and tactical training operations.

MIDSOLE: PU-injected for high-impact shock absorption and lasting resilience, maintaining comfort and protection through long, high-intensity operations.

INSOLE: TPU anatomical insole engineered for optimal cushioning, arch support, and stability.

SHANK: Full Length polypropylene board providing outstanding stability and torsional support.

OUTSOLE: 3/8-inch Vibram® heavy-duty rubber outsole for extreme environments, delivering excellent traction, slip resistance, and low abrasion for sustained combat performance.

HEIGHT: 8 in

WEIGHT: ± 51 oz per pair (± 1450 g)

COLORS: Black Leather | Dark Brown

SIZES

U.S. 6.5 – 14 | EU 39 – 48

OPTIONAL

- ★ Vibram® Outsole with Mont Compound for extreme terrain performance
- ★ 3M Thinsulate™ insulation ★ SYMPATEX® PFAS-free waterproof membrane
- ★ Composite safety toe meeting ASTM F2413 and EN ISO 20345 standards for 200 J impact

TACTICAL

AGILITY, COMFORT & CONTROL.

Created for rapid response and mobility, these tactical boots balance flexibility, stability, and grip. Reinforced ankle support, durable construction, and performance soles ensure agility and control in every operation.

TACTICAL RAID | L-1

GOODYEAR

Engineered for rapid response and high-mobility missions, the TACTICAL RAID L-1 is a lightweight tactical boot designed for professionals who demand speed, flexibility, and lasting comfort in dynamic operations. Exceeds the ASTM F2913 and EN ISO 20347 slip-resistance requirements.

DESIGNED &
ENGINEERED
IN THE
USA

TACTICAL BOOTS



UPPER: Genuine suede cattlehide leather combined with Cordura® 1000D nylon for high abrasion resistance, breathability, and flexibility in fast-paced field use.

MIDSOLE: EVA-injected for responsive shock absorption, superior cushioning, and energy return during long tactical operations.

INSOLE: TPU anatomical insole delivering comfort, arch support, and long-term durability.

SHANK: Full-length polypropylene board covering the majority of the sole for improved stability, torsional rigidity, and lateral support.

OUTSOLE: Goodyear Tactical Performance compound with a lug pattern inspired by the Goodyear Assurance WeatherReady tire, delivering enhanced traction, excellent non-slip performance, and a DIN abrasion value below 90 for durable all-terrain use.

LACING SYSTEM: 3 mm multifilament nylon laces with nylon-coated brass eyelets and speed hooks ensuring smooth operation, corrosion resistance, and a secure fit.

HEIGHT: 8 in

WEIGHT: ± 28 oz per pair (± 800 g)

COLORS: Olive Green | Black | Dark Grey | Coyote Brown | Coyote Desert Tan

SIZES

U.S. 5.5 – 14 | EU 38 – 48

OPTIONAL

- ★ YKK™ side zipper for quick entry and removal
- ★ 3M Thinsulate™ insulation
- ★ SYMPATEX® PFAS-free waterproof membrane

FIELD WEB L-2



Engineered for advanced field performance and high-mobility operations, the FIELD WEB L-2 is a tactical boot built for professionals who need stability, flexibility, and comfort on long missions. Designed with a wider last for improved balance and comfort, it exceeds ASTM F2913 and EN ISO 20347 slip-resistance standards.



TACTICAL BOOTS



ROX

UPPER: Genuine suede cattlehide leather with Cordura® 1000D nylon for strong abrasion resistance, breathability, and durability. Dual rear webbing panels enhance stability and controlled flexibility around the heel.

MIDSOLE: EVA-injected for superior cushioning, responsive shock absorption, and optimal energy return during long-duration operations.

INSOLE: TPU anatomical insole offering high arch support, long-term comfort, and shape retention.

SHANK: Full-length polypropylene board providing torsional rigidity and lateral stability.

OUTSOLE: Goodyear Tactical Performance compound featuring tire-inspired lug geometry derived from the Goodyear Assurance WeatherReady design, providing strong multi-terrain grip, reliable slip resistance, and a DIN abrasion value below 90 for long-lasting durability.

LACING SYSTEM: 3 mm multifilament nylon laces with brass eyelets and speed hooks ensuring smooth operation, corrosion resistance, and a secure fit in wet conditions.

HEIGHT: 8 in

COLORS: Olive Green | Black | Dark Grey | Coyote Brown | Desert Tan

SIZES

U.S. 4.5 – 15 | EU 36 – 49

OPTIONAL

- ★ YKK® 8 mm Vislon® zipper with T-Film water-repellent tape
- ★ 3M™ Thinsulate™ insulation
- ★ SYMPATEX® PFAS-free waterproof membrane

OFFICER SHOES

DISTINCTION IN EVERY STEP

Elegant yet durable, these officer boots combine polished design with professional comfort. Premium leather, precision stitching, and structured support deliver authority and confidence in both formal and field settings.

ELEGANT OXFORD

GOODYEAR

Crafted for classic everyday elegance, the Elegant Oxford delivers full-grain leather durability, strong structure, and lasting comfort, supported by a cushioned interior and a long-wear Goodyear outsole for durable performance.

OFFICER SHOES



UPPER: Premium full-grain cattlehide leather offering durability, natural strength, and a clean polished finish, crafted for exceptional shape retention, superior flexibility, and long-lasting professional appearance with reinforced structural integrity.

SOLE: Full rubber Goodyear S8 compound sole delivering a refined profile, strong rigidity, and dependable traction, with DIN 100 abrasion performance that exceeds application demands and ensures confident, long-lasting slip-resistant control in varied environments.

INSOLE: Soft removable comfort insert with breathable cushioning for improved all-day support, enhanced shock absorption, and superior wearing comfort throughout extended use.

LACING: Classic closed-lace derby construction designed for a secure fit, smooth adjustment, and a refined, professional look with reliable everyday usability.

COLORS: Black | Brown | Dark Grey

STYLE: Low cut

SIZES

U.S. 6.5 to 12

OPTIONAL

★ Antimicrobial insole for odor control and hygienic long-term wear

DYNAMIC OXFORD



Built with a modern sportive character, the Dynamic Oxford blends full-grain leather durability with a sleek energetic shape and lasting comfort, supported by cushioned interiors and a long-wear Goodyear outsole for dependable performance in professional environments.

OFFICER SHOES



ROX

UPPER: Premium full-grain cattlehide leather offering durability, smooth texture, and a refined finish with a dynamic, contemporary feel, enhanced by excellent shape retention and long-term surface resilience.

SOLE: Full rubber Goodyear S8 compound sole offering strong rigidity and dependable traction with DIN 100 abrasion performance that exceeds application demands and ensures long-lasting slip-resistant control for professional use.

INSOLE: Soft removable comfort insert delivering breathable cushioning, flexible support, and improved all-day comfort during extended wear.

LACING: Open pattern enhancing its contemporary sportive aesthetic while maintaining elegance and providing secure, adjustable foot containment.

COLORS: Black | Brown

STYLE: Low cut

SIZES

U.S. 6.5 to 12

OPTIONAL

★ Antimicrobial insole for odor control and hygienic long-term wear

RIDGELINE



Designed with a refined high-cut profile, the Ridgeline offers full-grain leather strength, elegant structure, and steady comfort, supported by a cushioned interior and a long-wear Goodyear outsole for reliable, all-day performance.

OFFICER SHOES



ROX

UPPER: Premium full-grain cattlehide leather providing solid durability, smooth finish, and a clean elegant silhouette suited for elevated daily wear, offering enhanced flexibility and long-lasting surface resilience.

SOLE: Full rubber Goodyear S8 compound sole delivering firm stability and dependable traction, with excellent abrasion performance that exceeds application demands for long-lasting slip-resistant control, ensuring confident movement on varied surfaces.

INSOLE: Soft removable comfort insert providing breathable cushioning and steady support for extended wear, enhancing pressure distribution and improving comfort.

CONSTRUCTION: Elastic side panels for an easy, secure fit while maintaining a sleek dress appearance.

COLORS: Black | Brown

STYLE: Mid cut

SIZES

U.S. 6.5 to 12

OPTIONAL

★ Antimicrobial insole for odor control and hygienic long-term wear

URBAN LITE



Shaped for relaxed everyday elegance, the Urban Lite combines full-grain leather comfort with a clean moccasin inspired profile, delivering durability, soft flexibility, and dependable performance through its cushioned interior and long-wear Goodyear outsole.

OFFICER SHOES



ROX

UPPER: Premium full-grain leather offering smooth texture, strong durability, and a naturally flexible feel suited for daily comfort.

SOLE: Full rubber Goodyear S8 compound sole providing firm stability and dependable traction, with excellent abrasion performance that exceeds application demands for long-lasting slip-resistant control.

INSOLE: Soft removable comfort insert delivering breathable cushioning and easy all-day wear.

CONSTRUCTION: Slip-on design with refined stitching for a clean, versatile appearance.

COLORS: Black | Brown

STYLE: Low cut

SIZES

U.S. 6.5 to 12

OPTIONAL

★ Antimicrobial insole for odor control and hygienic long-term wear

COMFORT STEP

SOLES
BY
MICHELIN

Designed for practical daily use, the Comfort Step delivers a lightweight, refined profile with lasting comfort and strong durability. In collaboration with Soles by MICHELIN, the comfort step offers smooth flexibility, dependable support, and steady all-day performance.

OFFICER SHOES



UPPER: Premium full-grain leather providing durability, soft flexibility, and a clean, polished appearance suited for everyday wear.

SOLE: Michelin rubber OC3 compound sole, engineered for lightweight practicality and excellent traction, featuring an abrasion value of 110 for reliable long-lasting performance.

INSOLE: Soft removable comfort insert offering breathable cushioning and steady support throughout the day.

CONSTRUCTION: Clean slip-on silhouette with refined stitching for a versatile modern look.

COLORS: Black | Brown | Dark Grey

STYLE: Low cut

SIZES

U.S. 6.5 to 12

OPTIONAL

★ Antimicrobial insole for odor control and hygienic long-term wear



RUNNING



ENGINEERED FOR SPEED, BUILT FOR COMFORT

Lightweight, responsive, and durable, these running shoes merge cushioning with stability. Designed to reduce fatigue and enhance energy return, they perform across asphalt, trail, or tactical training conditions.

GLIDE - X



Designed for smooth propulsion and modern running performance, the GlideX pairs a carbon plate with an EVA midsole and a Goodyear rubber outsole to deliver responsive energy, lightweight comfort, and stable grip.



RUNNING SHOES



UPPER: Breathable synthetic materials reinforced with TPU for strength and stability, combined with semi-transparent mesh zones and stretch fabric for flexibility, airflow, and a clean modern look.

MIDSOLE: EVA foam engineered for lightweight cushioning and fast energy rebound.

PLATE: Integrated carbon plate providing enhanced propulsion, improved stride efficiency, and smooth forward transition.

INSOLE: EVA comfort insole offering flexible support and soft step-in cushioning.

OUTSOLE: Goodyear rubber outsole delivering durable traction and confident grip across road and mixed surfaces.

LACING: Reinforced lace loops providing a secure and stable lockdown.

COLORS: Black | Coyote | Grey | Olive Green

SIZES

U.S. 5 to 12

STRIDE CORE

GOODYEAR

Crafted for fluid motion and modern running efficiency, STRIDE CORE blends a carbon drive plate with a reactive EVA base and a Goodyear rubber sole to deliver energetic rebound, light underfoot comfort, and dependable traction.

DESIGNED &
ENGINEERED
IN THE
USA

RUNNING SHOES



UPPER: Ventilated synthetic layers supported with TPU structure, paired with premium stretch fabric zones that enhance mobility, airflow, and a clean athletic appearance.

MIDSOLE: EVA compound designed for weight reduction, smooth cushioning, and quick energy return during repeated strides.

PLATE: Integrated carbon element boosting forward momentum, refining running economy, and maintaining a seamless transition through each step.

INSOLE: EVA comfort footbed providing flexible support, cushioned impact absorption, and a soft initial feel.

OUTSOLE: Goodyear rubber platform offering long-lasting durability, confident road grip, and stable performance on mixed terrain.

LACING: Reinforced lace channels delivering a secure, supportive lockdown throughout active movement.

COLORS: Black | Coyote | Grey | Olive Green

SIZES

U.S. 6 to 12



OUTDOOR



CONQUER EVERY TERRAIN

Designed for explorers and adventurers, these boots offer protection and grip across mountains, mud, and rock. Durable uppers and reinforced soles ensure comfort and stability in all outdoor conditions.

CAMO TRAIL W-4

GOODYEAR

Built for multi-terrain missions from coastal sand to steep rocky trails, the CAMO TRAIL W-4 delivers outdoor mobility with tactical stability. Designed for users who need dependable grip, waterproof protection, and cushioned movement across constantly changing terrain.

DESIGNED &
ENGINEERED
IN THE
USA

OUTDOOR SHOES



ROX

- UPPER:** Military-grade synthetic camouflage fabric reinforced with TPU panels at the forefoot and heel for structure, strength, and stable foot positioning. Equipped with a SYMPATEX waterproof and breathable membrane for full weather protection.
- MIDSOLE:** High-rebound EVA engineered for impact absorption, dynamic cushioning, and enhanced bounce to maintain speed and comfort during long movement.
- INSOLE:** EVA anatomical footbed offering supportive comfort, flexibility, and long-term fatigue reduction.
- SHANK:** Semi-rigid stability layer for improved torsional control on uneven surfaces, enhancing safety and balance under load.
- OUTSOLE:** Goodyear outdoor-performance rubber delivering reliable traction on sand, dirt, rock, and wet ground. Multi-directional lugs ensure secure grip, controlled braking, and strong abrasion resistance.
- HEIGHT:** Low-cut outdoor tactical profile
- WEIGHT:** Lightweight for fast mobility
- COLORS:** Tactical Camouflage Olive Green | Black | Grey | Coyote | Desert Tan

SIZES

U.S. 6.5 to 12

ACTIVE FLEX 3



Designed in collaboration with GOODYEAR soles using a WRANGLER wheel-inspired lug geometry, the ACTIVE FLEX 3 delivers strong grip, flexibility, and confident movement on mixed surfaces. Built for everyday performance, it provides lightweight comfort, modern style, and dependable function.



OUTDOOR SHOES



ACTIVE FLEX 3

- UPPER:** Breathable synthetic mesh paired with seamless structural overlays for flexibility, airflow, and reduced weight. Soft interior lining and padded collar ensure all-day comfort for walking, running, or casual use.
- MIDSOLE:** High-rebound EVA engineered for responsive cushioning, impact absorption, and forward energy return during sport activities or daily movement.
- INSOLE:** EVA comfort footbed for a supportive, natural underfoot feel with long-wear cushioning softness and stability.
- OUTSOLE:** GOODYEAR performance rubber with short, multi-directional lugs inspired by Wrangler tire geometry. Engineered for outstanding grip on pavement, gravel, light trails, and indoor surfaces. Lug depth is optimized for daily silent comfort while still delivering excellent traction and abrasion resistance.
- LUG DESIGN:** Lug configuration inspired by the Wrangler GOODYEAR wheel enhances braking, lateral control, and stable contact from city running to rough surfaces and gym environments.
- HEIGHT:** Low athletic profile
- WEIGHT:** Ultra-light daily performance
- COLORS:** Red | Black | Grey | Coyote | Olive Green | Coyote Desert Tan

SIZES

U.S. 6.5 to 12



EVERY MISSION ENDURES

ROX

HEADQUARTERS United Arab Emirates

CONTACT US

North America +1 514 865 5881

Europe +49 152 0433 8556

Middle East +971 50 536 9044

+973 3690 0060

info@rox-tactical.com

www.rox-tactical.com

 +971 50 752 4041

  [rox.footwear](https://www.instagram.com/rox.footwear)